



# Sailing Instructions

Auckland Anniversary Day Regatta  
Monday 30 January 2023

Organising Authority: *Auckland Anniversary Regatta Inc.*,  
C/- Royal New Zealand Yacht Squadron, 101 Westhaven Drive, Westhaven 1011  
Tel 0800-REGATTA E: [admin@regatta.org.nz](mailto:admin@regatta.org.nz)

*In conjunction with the Royal New Zealand Navy, Bucklands Beach Yacht Club, Devonport Yacht Club, Dragon Boat Association, Kawau Boating Club, Kohimarama Yacht Club, Manly Sailing Club, Northcote Birkenhead Yacht Club, Royal Akarana Yacht Club, Royal NZ Yacht Squadron, Sea Scouts NZ, Tamaki Yacht Club, Takapuna Boating Club, and Wakatere Boating Club*

HIGH Tide: Waitemata Harbour – 1518Hrs (2.99m)

## **Amendment One 14/01/2023**

**– Clause 4.4 Farr 3.7s deleted from Takapuna Boating Club and added to Wakatere Boating Club and changed time of First Warning signal for Farr 3.7 and 420**

### **1.0 Rules**

- 1.1 The Auckland Anniversary Day Regatta will be governed by the “rules” as defined in the Racing Rules of Sailing.
- 1.2 Competitors shall abide with the prohibited racing areas as outlined in Addendum A – Prohibited Racing Areas.
- 1.3 The YNZ Safety Regulations Part I shall apply to unballasted centreboard boats, open boats and sailboards.
- 1.4 The YNZ Safety Regulations Part II Category 5 shall apply to keelboats and multihull boats with the exception of the Passage Races where Category 4 shall apply to keelboats and multihull boats. It is recommended that all boats shall carry an inflated dinghy, a life-raft or tow a rigid dinghy capable of carrying the entire crew as per YNZ Safety Regulations.
- 1.5 The YNZ Safety Regulations Part V Category C shall apply to trailer yachts.
- 1.6 The YNZ Safety Regulations Part VI Category B shall apply to sports boats.
- 1.7 Appendix E shall apply to Radio Controlled boats.
- 1.8 The Racing Rules of Auckland Dragon Boating shall apply to Dragon Boats.
- 1.9 Tugboats, Launches, Tall Ships and Waka to comply with Maritime NZ Rules and Regulations.
- 1.10 Should there be any conflict between the Notice of Race and these Sailing Instructions, the Sailing Instructions shall prevail. This amends RRS Rule 63.7
- 1.11 Appendix T, Arbitration will apply.

### **2.0 Changes to Sailing Instructions**

Any changes to the sailing instructions will be will be posted before 0900 on [www.regatta.org.nz](http://www.regatta.org.nz) the day it will take effect, except that any change to the schedule of races will be posted by 2000hrs on the day before it will take effect.

### **3.0 Communications with Competitors**

- 3.1 Notices to competitors will be posted on the website: [www.regatta.org.nz](http://www.regatta.org.nz)
- 3.2 While racing, from the first warning signal until the end of the last race of the day, except in an emergency or to advise retirement from racing a boat shall not make voice or data transmission and shall not receive voice or data communications that is not available to all boats.  
Race Control call sign “Anniversary Control” may be contacted on **VHF channel 4**  
or on mobile: 021 818-448  
Please use the name of the area e.g. “Auckland”, “Mahurangi”, “Kawau” or “Rakino” Anniversary Control

#### 4.0 Schedule of Events

##### 4.1 Waitemata & Viaduct Harbour Races, Dragon Boats, Tugboats, Classic Launches, & Keelboats

Division	Location	Warning Signal	Start Time	Division Flag
Dragon Boats	Viaduct Harbour	0900 Briefing	0930hr	None
Tugboats	Waitemata Harbour	0955hr	1000hr	CYA
Classic Launches	Waitemata Harbour	1055hr	1100hr	CYA
A Classic	Waitemata Harbour	1155hr	1200hr	Black
Modern Classic	Waitemata Harbour	1200hr	1205hr	White
Division 1 (12.19m and over)	Waitemata Harbour	1205hr	1210hr	Green
Division 2 (9.5m-12.19m)	Waitemata Harbour	1210hr	1215hr	Black
Division 3 (up to 9.5m)	Waitemata Harbour	1215hr	1220hr	White
B Classic	Waitemata Harbour	1220hr	1225hr	Green
Waka Ama (Outrigger canoe)	Waitemata Harbour	1225hr	1230hr	White
Waka Hourua & Tall Ships	Waitemata Harbour	1230hr	1235hr	Green
Launch Parade	Waitemata Harbour		1300hr	None

##### 4.2 Passage Races

Division	Location	Warning Signal	Start Time	Division Flag
M1 No extras	Mahurangi	0855hr	0900hr	Black
M2 Open	Mahurangi	0900hr	0905hr	White
K1 Open	Kawau Island	0855hr	0900hr	Green
K2 2xHanded	Kawau Island	0900hr	0905hr	Black
R1 No extras	Rakino Island	0955hr	1000hr	Green
R2 Reactor 25	Rakino Island	1000hr	1005hr	Black

##### 4.3 Radio Controlled Yachts

Division	Location	Registration	Briefing	First Warning Signal
Electron	Marine Industries pontoon, Westhaven	0800-0930hr	0930hr	0958hr
International One Metre	St. Mary's Bay	0900hr	0930hr	1000hr Race 1 Start

#### 4.4 Centreboard & Dinghy fleets

Class	Location	Registration	Briefing	First Warning Signal
Optimists Starlings	Kohimarama Yacht Club	See Clause 4.8		
Sea Scout Cutters Navy Crown Sunburst	Narrow Neck Beach	0945hr See Clause 4.6	1030hr	1100hr Race Start
RS Quest RS Aero	Northcote Birkenhead Yacht Club			1155hr
29er 49er 49erFX	Royal Akarana Yacht Club	See Clause 4.9		1 1 1
Laser Laser Radial Laser 4.7	Tamaki Yacht Club		1130hr	1230hr Race Start
Windfoil Kite Foil Wing Foil Nacra 15 & 17 Waszp Moth A Class	Takapuna Boating Club	See Clause 4.7		1200hr
<del>Farr 3.7</del>	<del>Takapuna Boating Club</del>	<del>0900-1045hr</del>	<del>1045hr</del>	<del>1200hr</del>
O'pen Skiff RS Feva Zephyrs Cherub	Manly Sailing Club	0900-1030hr	1100hr	1200hr
420 Farr 3.7	Wakatere Boating club			1055hr

- 4.5** Sailing Instructions for Centreboard and Dinghy Racing, Radio Controlled Yachts will be available on the day at the host club.
- 4.6** Narrow Neck Beach – registration and briefing will be held by the boat ramp at the southern end of the beach.  
Course and activities for the day will be dependent on the weather. In the event of unsuitable weather registration and discussion on the day's activities will take place at 0945hr.  
Call Sonja Brown 027 251 4585 to confirm your entry .
- 4.7** Boats competing with Takapuna Boating Club have the option of either a one or two day event.
- 4.8** Optimist and Starling Fleets, Kohimarama YC : AAR entry fee is included in fee for Auckland Championships 28-30 January 2023.
- 4.9** 29er, 49er, 49erFX Fleets, Royal Akanara YC: AAR entry fee is included in fee for Auckland Championships 28-30 January 2023.

## 5.0 Race Areas

The races will be held in the Hauraki Gulf, the Waitemata and Viaduct Harbours and Westhaven Marina.

## 6.0 Courses

### 6.1

<b>Division</b>	<b>Location</b>	<b>Course</b>
<b>Tugboats</b>	Waitemata Harbour	Start – Red Navigation Marker 20 (P) – Green Navigation marker 19 (P) – Finish. 6.2nm
<b>Classic Launches</b>	Waitemata Harbour	Start – Red Navigation marker 20 (P) – Green Navigation marker 19 (P) – Finish. 6.2nm
<b>Keelboats</b>	Waitemata Harbour	Start – Torpedo (S) – North Head Buoy (P) – Cable Buoy (S) – Saltworks Buoy (S) – Motukorea Buoy (S) – Finish. 14.2nm
<b>Waka Ama</b>	Waitemata Harbour	Start – Orakei Buoy (P) – Finish. 3.1nm
<b>Waka Hourua &amp; Tall Ships</b>	Waitemata Harbour	Start – Bean Rock Buoy (S) – Finish. 5.0nm
<b>Launch Parade</b>	Waitemata Harbour	Start – Harbour Bridge – circuit of Jellicoe Harbour-Princes Wharf-Red Westhaven buy & repeat to Princes Wharf - disperse
<b>PASSAGE RACES</b>	Mahurangi	Start – Outer Whangaparaoa Navy Buoy (S) – Finish. 23.4nm
	Kawau Island	Start – Outer Whangaparaoa Navy Buoy (S) – Finish. 27.1nm
	Rakino Island	Course 1 – Start – Motutapu Island (S) – Motuihe Passage – Motukorea Buoy (S) – Saltworks Buoy (P) – Finish. 13.5nm
		Course 2 – Start – Motuihe Island (S) – Ilimoana Buoy (P) – Bean Rock Buoy (P) – Finish. 11.2nm

**6.2 Dragon Boats** – available at the 0900hr briefing at Viaduct Harbour.

**6.3 Centreboard Boats** – refer to Sailing Instructions issued by host club.

**6.4 Radio Controlled Yachts** – available at the 0930 briefings at Westhaven Marina and St. Mary's Bay.

## 7.0 Fairway Marks

Boats racing shall pass on the main channel side of the following fairway marks:

1. Rangitoto Beacon,
2. Iliomama Rock Beacon,
3. Browns Island Beacon,
4. Beacon on Emu Rock (off Motutapu),
5. Bean Rock Light and Doris Rock Beacon (approx. 25m north),
6. Red buoys on eastern side of Motuihe Channel,
7. Beacon on Sewer Outlet (Orakei),
8. Cable beacons east of Devonport Wharf,
9. Green Sandspit marker stake (SW of Torpedo Wharf),
10. All moored vessels in or adjacent to the designated Small Craft Moorings areas shown on Chart NZ 5322.
11. The Okahu Bay wave break and all moored vessels in the Okahu Bay mooring area
12. The harbour bridge main navigational span pylons.

## 8.0 Obstructions – refer Addendum A

### 9.0 The Start

- 9.1 The start line for all races will be between a staff displaying an orange flag on the race committee vessel displaying the AARC flag at the starboard end and the port-end starting mark.
- 9.2 **Dragon Boats.** Starting line information will be provided at the 0900hr briefing.
- 9.3 **Tugboats, Classic Launches, Keelboats, Waka.** The Race Committee vessel will be positioned off the Westhaven Marina wave break, and the start line will be between the committee boat and yellow Westhaven Buoy.
- 9.4 **Centreboard Boats** – refer to the Sailing Instructions issued by the host venue.
- 9.5 **Passage Races.** Prior to the first warning signal boats shall approach the committee vessel, hail their sail number and receive an acknowledgement.
  - 9.5.1 **From Mahurangi** – The Race Committee vessel will be positioned off Sadler Point at the entrance to Mahurangi Harbour
  - 9.5.2 **From Kawau Island** – The Race Committee vessel will be positioned at the entrance to Bon Accord Harbour.
  - 9.5.3 **From Rakino Island** – The Race Committee vessel will be positioned between Rakino Island and Waikalabubu Bay.
- 9.6 **Radio Controlled Yachts.** Starting line information will be provided at the 0930hr briefings.
- 9.7 Boats whose warning signal has not been made shall avoid the starting area.

### 10.0 The Finish

- 10.1 **Dragon Boats.** Information will be provided at the 0900hr briefing.
- 10.2 **Tugboats.** The finish line will be between a staff displaying a blue flag on the race committee vessel displaying the AARC flag and the course side of Westhaven Buoy positioned to the North.
- 10.3 **Classic Launches.** The finish line will be between a staff displaying a blue flag on the race committee vessel displaying the AARC flag and the course side of Westhaven Buoy positioned to the North.
- 10.4 **Keelboats, Waka Hourua, Tall Ships & Passage Races.** The finishing line is between a staff displaying a blue flag on the race committee vessel and the course side of Resolution Buoy.
  - 10.4.1 If the Race Committee is absent when a boat finishes she should report her finishing time, and her position in relation to nearby boats, to the race committee at the first reasonable opportunity.
- 10.5 **Waka Ama.** The finishing line is between Orakei Buoy and the northern end of Orakei Wharf.
- 10.6 **Centreboard Boats.** Refer to the Sailing Instructions issued by host club.
- 10.7 **Radio Controlled Yachts.** Information will be provided at the 0930hrs briefings.

## 11.0 Penalty System

- 11.1 RRS Rule 44 shall apply for all boats.
- 11.2 Appendix P may also apply.

## 12.0 Time Limit

- 12.1 The time limit for all divisions shall be 1700hrs
- 12.2 Boats failing to finish within the time limit will be scored Did Not Finish without a hearing. This changes RRS 35, A5.1 and A5.2.

## 13.0 Hearing Requests

Protests must be lodged with the AAR Committee, on VHF Channel 4 or 021 818 448 no later than two hours after the last boat in the division finishes (RRS 61.3) on Monday 30 January 2023. Any protest hearings will take place at the Royal NZ Yacht Squadron at 1800hrs on Tuesday 31 January 2023, unless otherwise notified.

## 14.0 Scoring

Handicaps will be calculated using handicaps set by the AARC with the assistance of Class handicappers, the New Zealand Trailer Yacht Association and YNZ PHRF systems.

## 15.0 Safety Regulations

- 15.1 A boat that retires from a race shall notify the race committee at the first reasonable opportunity on VHF Channel 4 or 021 818448.
- 15.2 **Emergency & Distress Calls** - Requests for assistance are to comply with international calling formats and direction, as follows:

Distress & Emergency Calls:	VHF channel 16 (Coastguard Northern Region)
Prompt Vessel or Medical assistance:	VHF channel 64 for inner Harbour VHF channel 60 for the outer Gulf
	Mobile: *500

- 15.3 Waka Ama shall provide a safety boat for Waitemata Harbour races

## 16.0 Results

Any results appearing on the Auckland Anniversary Regatta website shall be provisional only (subject to the hearing of any protests) until confirmed as Final. Results will be available for inspection at participating yacht clubs as soon as possible, and on the AAR website: [www.regatta.org.nz](http://www.regatta.org.nz)

## 17.0 Prizes

- 17.1 Trophies and prizes will be presented at the Official Prizegiving, commencing at 1830hrs Tuesday 21 February 2023 at the Royal New Zealand Yacht Squadron, Westhaven. Skippers must be present to collect spot prizes. Skippers must be present to claim cash prizes unless residing 50km from the Royal NZ Yacht Squadron and unable to attend the Prizegiving. These prizes will be transferred online to the winning skipper's bank account on receipt of the account details.
- 17.2 Waitemata Harbour Races Class Prizes: Additional prizes awarded to classes with a minimum of 5 entries

## 18.0 Media

There will be a drone operating and filming the Regatta along with a professional photographer. Any images will be available for use by the Auckland Anniversary Committee free of charge.

## 19.0 Risk Statement

RRS 3 states: 'The responsibility for a boat's decision to participate in a race or to continue to race is hers alone.' By participating in this event each competitor agrees and acknowledges that sailing is a potentially dangerous activity with inherent risks. These risks include strong winds and rough seas, sudden changes in weather, failure of equipment, boat handling errors, poor seamanship by other boats, loss of balance on an unstable platform and fatigue resulting in increased risk of injury. **Inherent in the sport of sailing is the risk of permanent, catastrophic injury or death by drowning, trauma, hypothermia or other causes.**

## 20.0 Insurance

Each participating boat shall be insured with valid third-party liability insurance with a minimum cover of \$5,000,000 per incident or the equivalent.

### **Celia Carson**

Principal Race Officer, Auckland Anniversary Regatta Inc.

027 451-6851

30 November 2022

## ADDENDUM A

**Prohibited Racing Areas:** Boats racing shall not sail in the prohibited racing areas listed below. These prohibited racing areas are designated as Obstructions for the purposes of the RRS Definitions and RRS 19 and 20.

- 1 The Commercial Harbour area defined by a straight line drawn between the most northern point of Wynyard Point and the north western point of the Fergusson (container) Terminal – (diagram A),
- 2 The Defence area marked on Chart NZ 5322 around the Naval Dock, Calliope Wharves, Z Devonport – (diagram B).

**Large Vessel Moving Prohibited Zones:** At all times boats shall comply with the Auckland Council Navigation Safety Bylaw 2021 Part 2, Subpart 10, clause 54 – “Moving Prohibited Zone” as described below. Moving Prohibited Zones are designated as Obstructions for the purposes of the RRS Definitions and RRS 19 and 20. Auckland Council Navigation Safety Bylaw 2021 – Part 2, Subpart 10 – 54 - **Vessels Must Not Impede a Large Vessel In A Pilotage Area,**

- 1 The person in charge of a vessel under 500 gross tonnage in a pilotage area must not allow that vessel to impede the navigation of any vessel of 500 gross tonnage or more.
- 2 The person in charge of a vessel must not navigate the vessel within the moving prohibited zone of a large vessel that is in a pilotage area.
- 3 A moving prohibited zone is an area of navigable water around a large vessel that –
  - a. extends 100 metres to each side or the width of the marked channel, whichever is the lessor distance; and
  - b. continues at the width in (a) to 100 metres astern and 500 metres ahead of the vessel; and
  - c. follows the line of the marked or buoyed channel when changing course.
- 4 However (2) does not apply to the pilotage area within the Tamaki River.



Diagram A

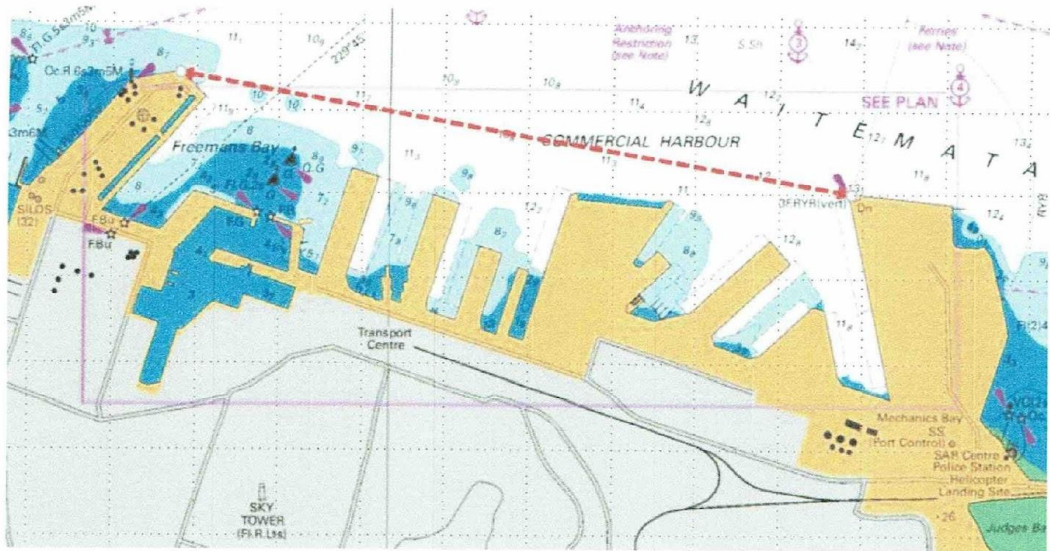


Diagram B

